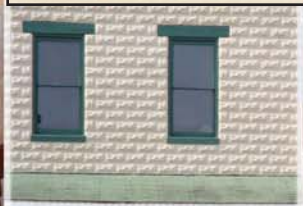


Waynesboro TENNESSEE



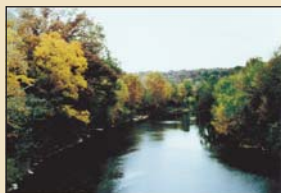


Tennessee State Hwy 13 and Hwy 64 meet at Waynesboro Court Square. A stroll across the courthouse lawn and on toward the gazebo reveals a county rich in history through the monuments and memorials dedicated to those who have served our country with honor and valor.

Antiques and specialty items can be found in shops around court square, along with a delicious mix of local cuisine.

***Off the Square
Hwy 13 North***

- Green River Stables
- Crazy Horse Park
- Buffalo River Trail Ride



***Off the Square
Hwy 64 East***

- Tennessee Fitness Spa
- Ms. Gracie's Quilting
- Windsor Woods
- Waynesboro City Pool



***Off the Square
Hwy 13 South***

- Waynesboro Golf Course
- Bonnie Blue Farm



**Wayne County
Chamber of Commerce**
www.waynecountychamber.org



*For complete visitor information on Tennessee call
1-800-GO2-TENN
or visit tnvacation.com*

